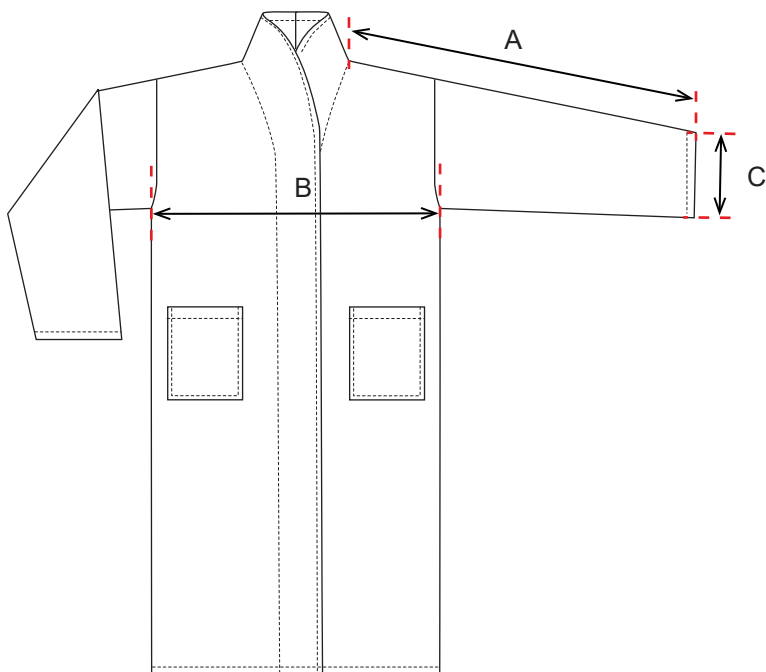


Supporting Material  
2.7 - 3.2.2.1\_1 Measuring Instructions for Bathrobe



A Shoulder seam length + sleeve length

Measure shoulder seam plus sleeve length from highest point of shoulder to sleeve end. Garment is flat on table.

---

B 1/2 Chest width

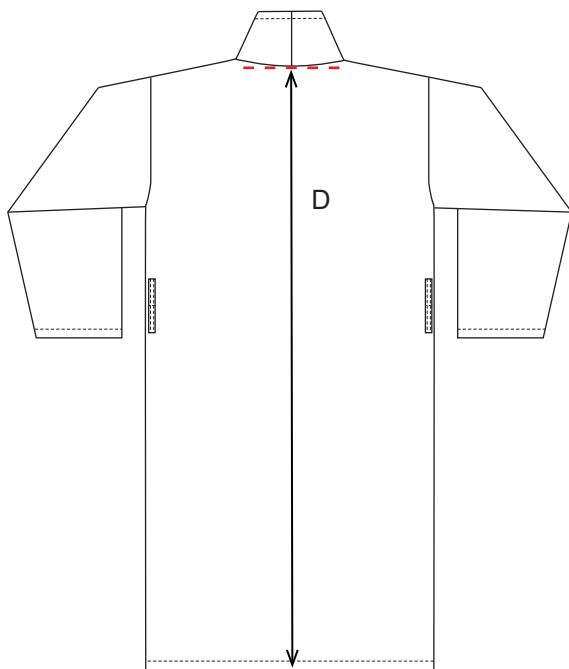
Measure half of chest width horizontally from under arm seam to under arm seam. Garment is flat on table.

---

C Sleeve end width

Measure sleeve end width along the edge from top to sleeve seam. Garment is flat on table.

---



D Back length

Measure back length vertically down from neck point to the edge of the hem. Garment is flat on table.