

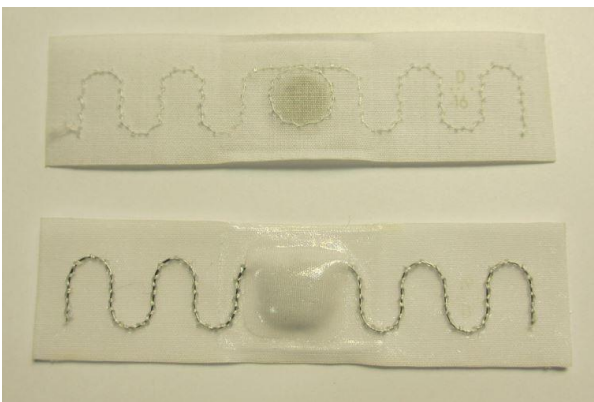
Placement and attachment of heat sealable UHF tag

1 Introduction

Lindström is replacing the old transponders with new UHF Tag. This instruction is for the garment manufacturers, who attach the UHF Tag to the garments in production.

UHF Tag is attached to all Lindström garments. Only correct tag FT301-PA can be used in Lindström garments. This tag contains Lindström Company ID, and it must not be used in any other supplier's garments!

Product name: Transponder FT301-PA Novo, 950 0200-281
Dimensions (L x H x W): 75mm x 20mm x 2,5mm



Attaching is done by using heat seal press.
Notice! The glue of the UHF Tag is on its shiny side!!

Recommended settings:

- sealing time: 12 sec
- sealing temperature: 205 C
- sealing pressure: 4-6 bar

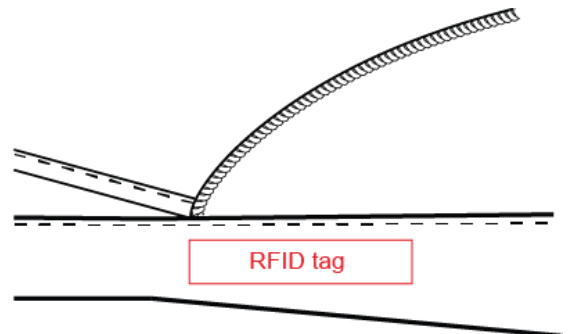
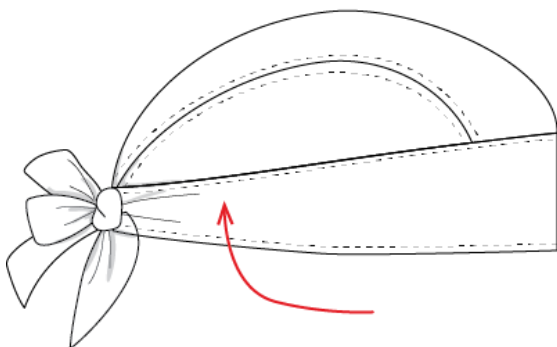
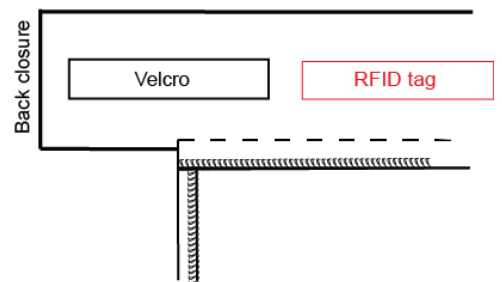
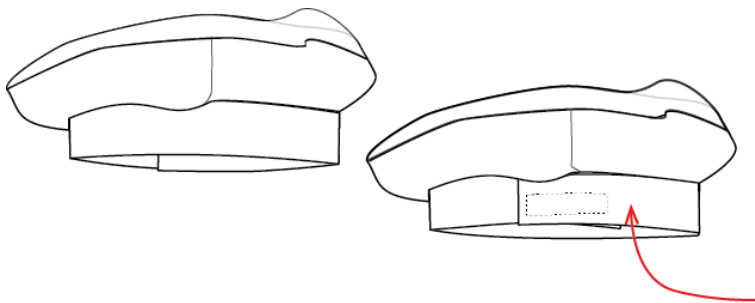
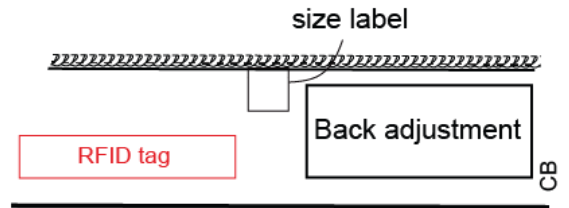
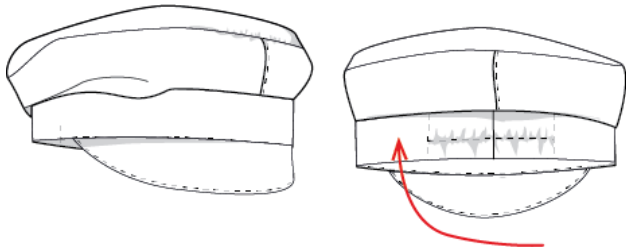
2 UHF tag placement

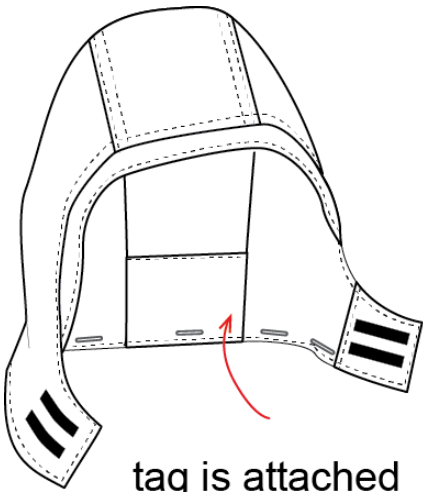
Generally the UHF Tag is attached to the reverse side of marking label in the garment.



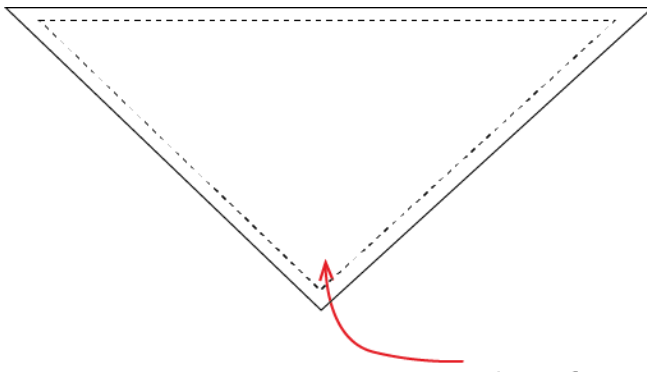
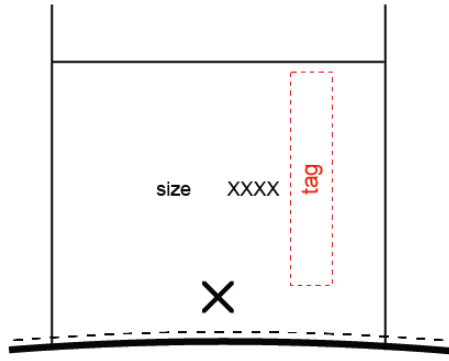
3.1 Hoods, hats, scarves

- UHF tag inside the headgear.





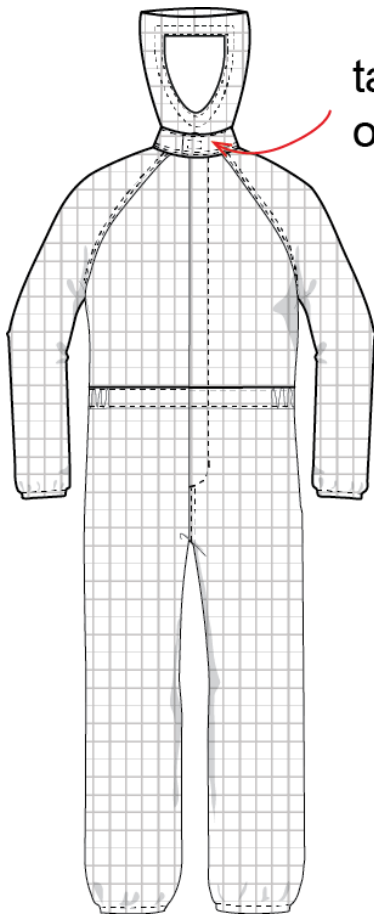
tag is attached to marking label



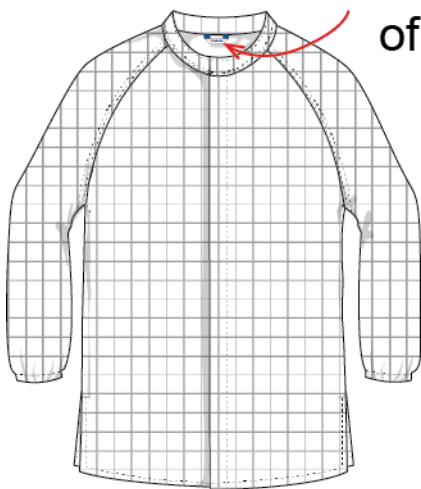
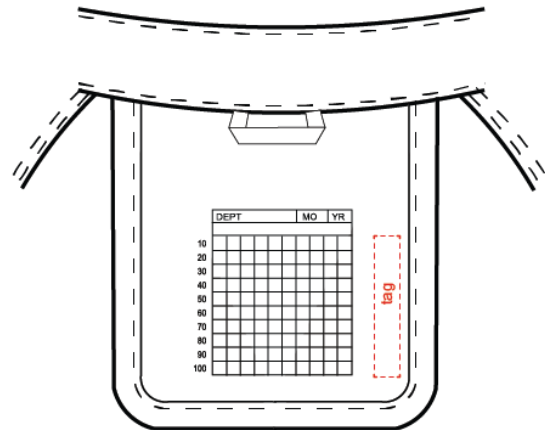
tag is attached to edge of scarf



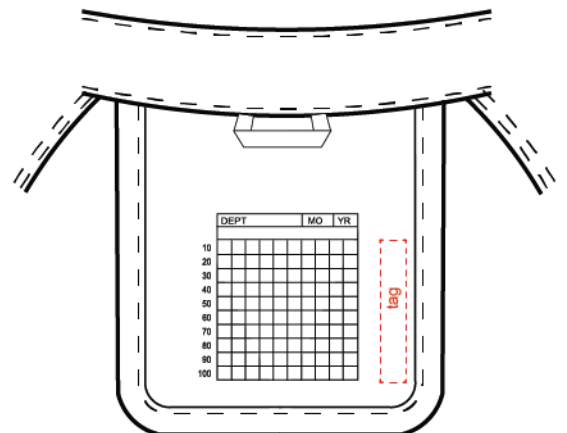
3.1 ESD, dust free, 100% pes



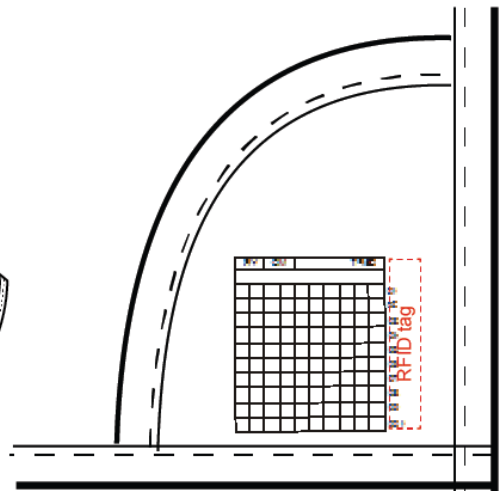
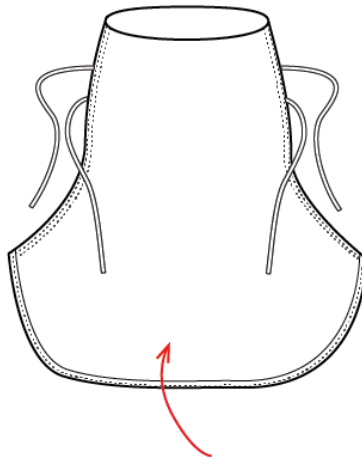
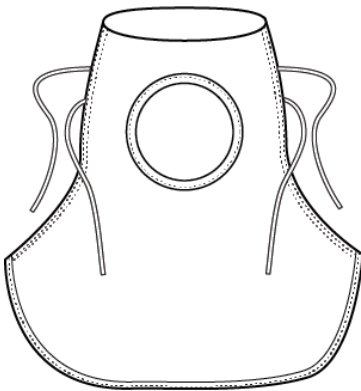
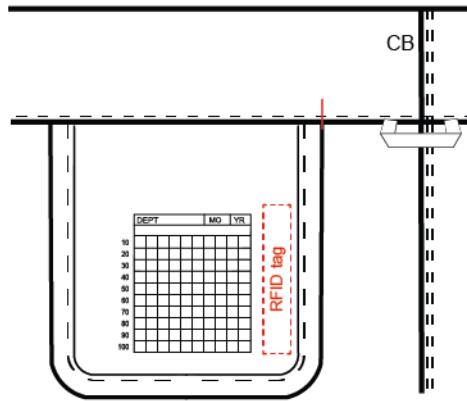
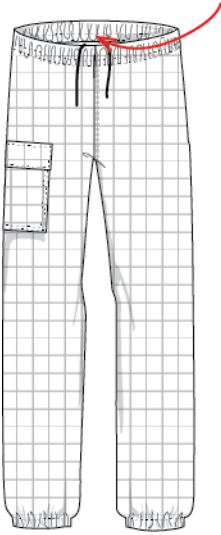
tag is attached to reverse side of marking label



tag is attached to reverse side of marking label



tag is attached to reverse side
of marking label



tag is attached to reverse side
of marking label

tag is attached to reverse side
of marking label

